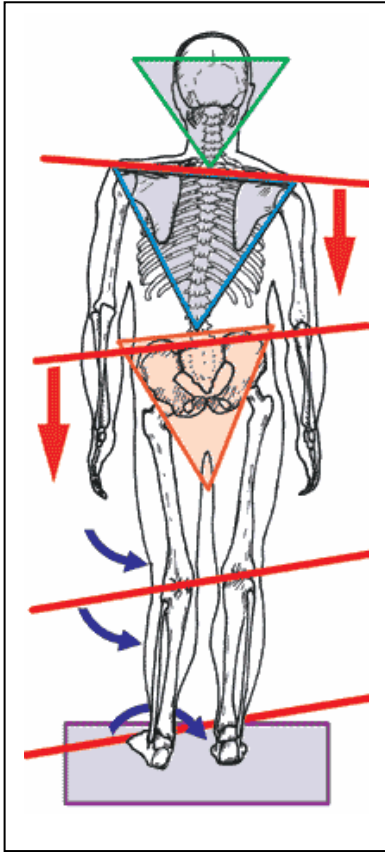


What is a Foot Scan?



If you've never had your feet scanned, you probably don't know what the scan is suppose to look like.

The foot scan is a pressure (thermal) image of your feet showing you how your weight is distributed across your feet. If the scan of your feet reveals any imbalances; this resulting image is analyzed and measured to create your unique pair of custom-made Stabilizers.

Let's face it

Your feet are the foundation for your entire body. Like any structure, your body's foundation must be stable to support the weight above it. *If the arches in one or both of your feet collapse, your body doesn't get the correct postural support, causing an imbalance in your skeletal frame.* Every time your foot hits the ground to take a step, you pass the imbalance all the way up your body. Over time, your body tries to compensate and this imbalance can cause pain in any number of places, like your knees, hips, and low back even if your feet don't hurt!

ARCH Mold custom-made orthotics is our first choice. These stabilizers support the arches of your foot to create a balanced foundation for your body allowing for a better chance at a more balanced swing.

The best part about getting your feet scanned is that you can see the imbalances! The scan creates a colorized image of each foot showing you the weight distribution of your three arches and areas of asymmetry on both of your feet. A near normal colorized image accompanies your scan providing a balanced, symmetrical foot scan for you to compare with.

